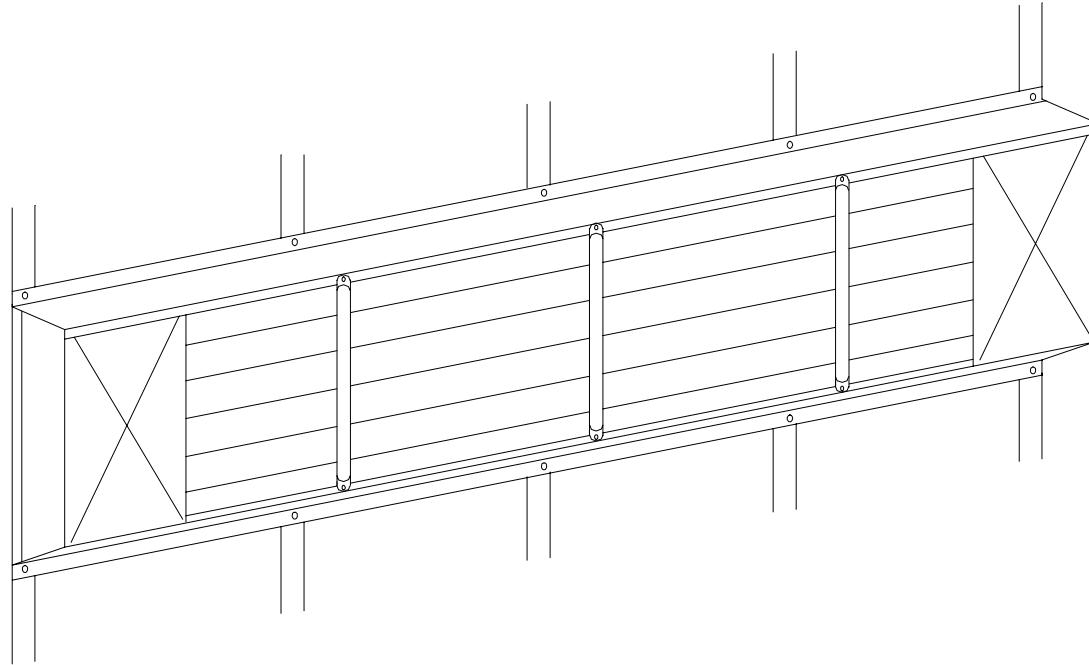


Poly-Vent Manual



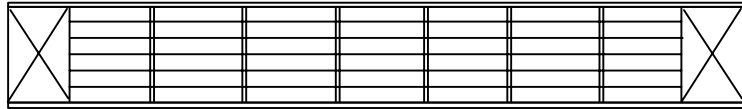
U.S. & Canada Toll Free
800-852-3443
FAX 651-463-2479



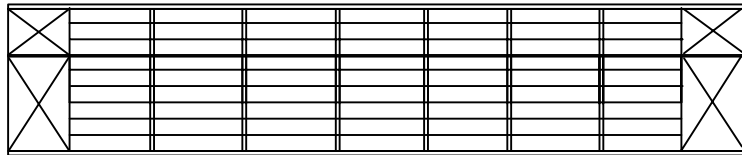
27725 Danville Ave
Castle Rock, MN 55010
651-463-7009
www.poly-tex.com



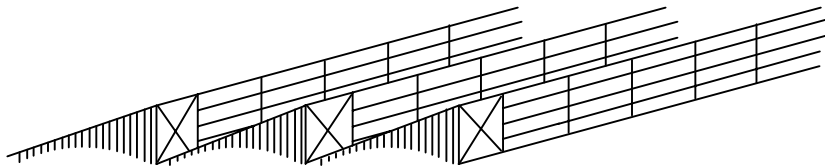
POLY-VENT APPLICATIONS



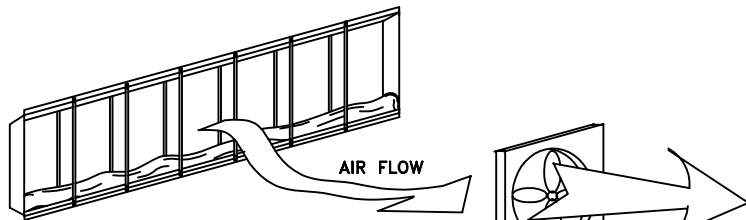
STANDARD METHOD



STACKED METHOD



SAWTOOTH INSTALLATION



USE AS A LOUVER

TABLE OF CONTENTS

POLY-VENT

INTRODUCTION AND PART DESCRIPTION.....PAGE 1

UPPER & LOWER RAIL DIMENSIONS.....PAGE 2

GUTTER & PANEL INSTALLATION.....PAGE 3

GUIDE INSTALLATION.....PAGE 4

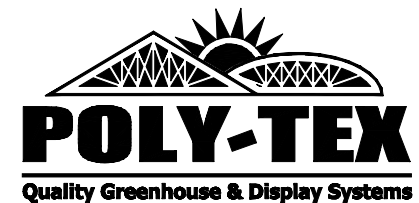
BLOWER AND THERMOSTAT INSTALLATION.....PAGE 5

POLY-VENT INSTALLATION.....PAGE 6

STACKED UPPER & LOWER RAIL DIMENSIONS.....PAGE 7

STACKED GUTTER & PANEL INSTALLATION.....PAGE 8

WARRANTY & CARE INSTRUCTIONS.....PAGE 9

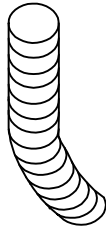


PART DESCRIPTION

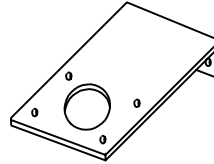
POLY-VENT

Due to the many different types of building materials used in greenhouse construction, no fasteners have been supplied to secure the Poly-Vent components to your structure.

Structural members placed horizontally (existing greenhouse frame members) sometimes can be used as an upper and lower rail. They can consist of: square tubing, rectangle tubing, lumber, or u-shaped girt. These existing members must have a distance of 1 1/2" from greenhouse post to the outside surface. Commonly, treated lumber such as 2x4's or 2x6's are installed as upper and lower rails. The 1 1/2" thickness is ideal for maintaining a 6" dimension within the Poly-Vent guides (WHICH IS CRITICAL).



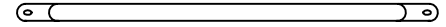
FLEX TUBING



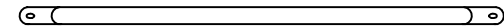
BLOWER MOUNT



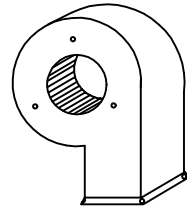
(SMALL)
PV CLIP



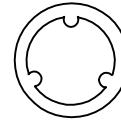
FRONT GUIDE



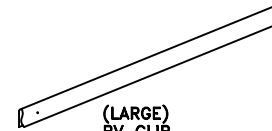
REAR GUIDE



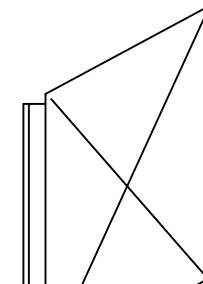
POLY-VENT BLOWER



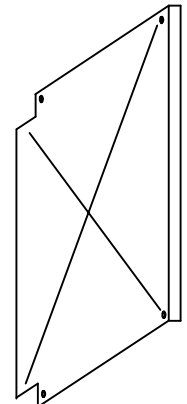
AIR TRANSFER GASKET



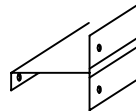
(LARGE)
PV CLIP



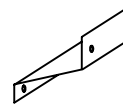
FRONT PANEL



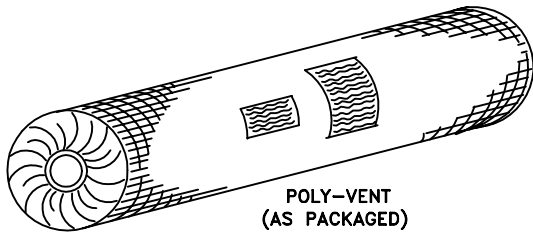
REAR PANEL



POLY-VENT
CENTER GUTTER



POLY-VENT GUTTER



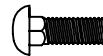
POLY-VENT
(AS PACKAGED)



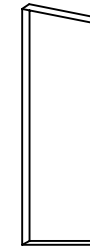
LOCK WASHER



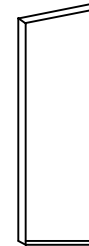
HEX NUT



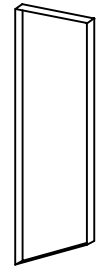
1/4" x 3/4"
CARRIAGE BOLT



STACKED
POLY-VENT
END PANEL
(LEFT)



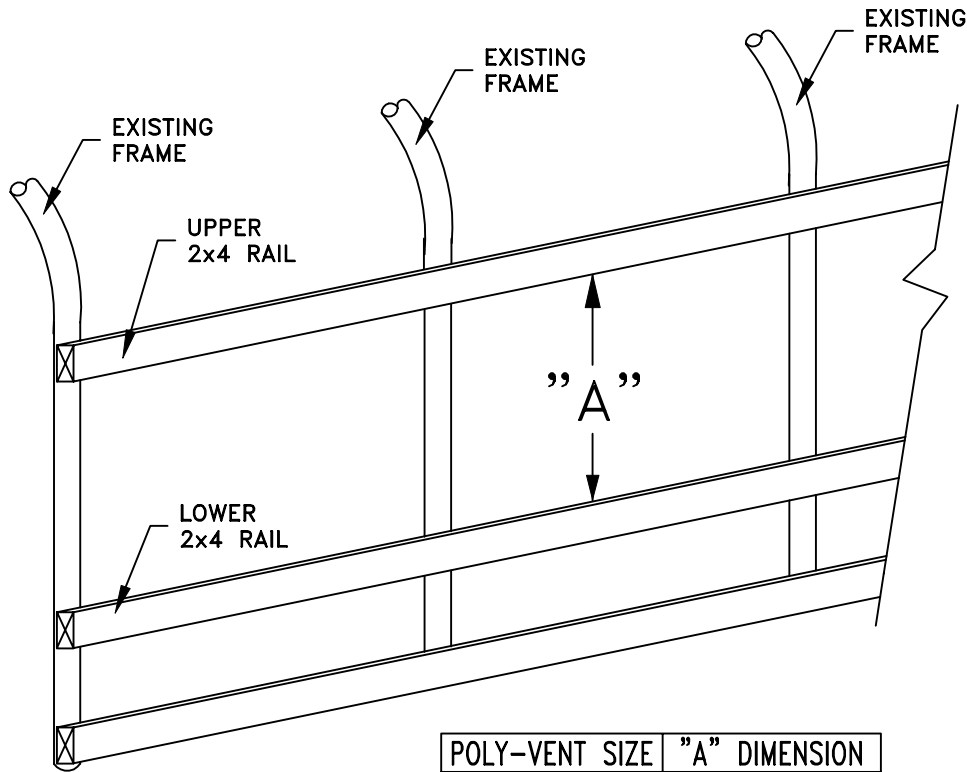
STACKED
POLY-VENT
END PANEL
(RIGHT)



END PANEL

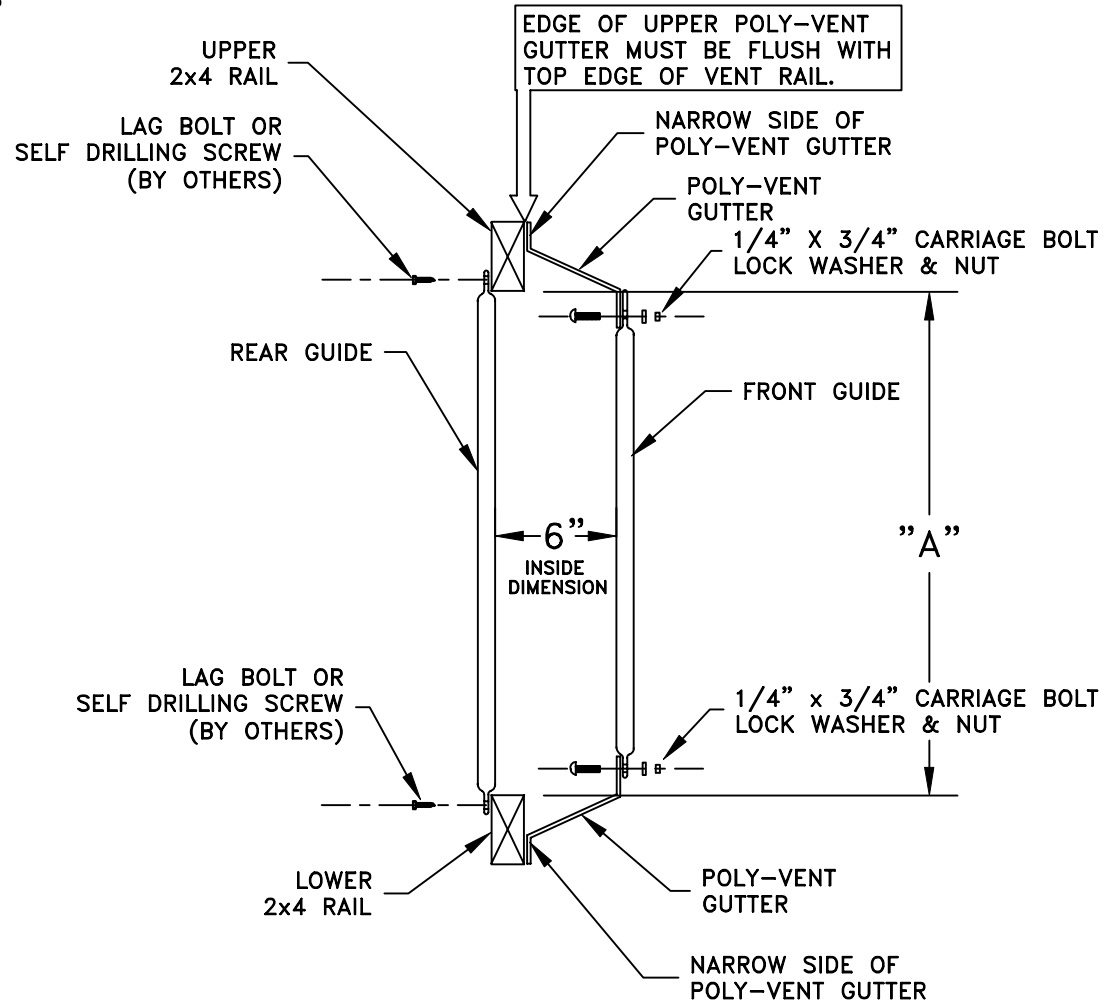
UPPER & LOWER RAIL DIMENSIONS

POLY-VENT



POLY-VENT SIZE	"A" DIMENSION
2'-0"	1'-7"
3'-0"	2'-7"
4'-0"	3'-7"
5'-0"	4'-7"

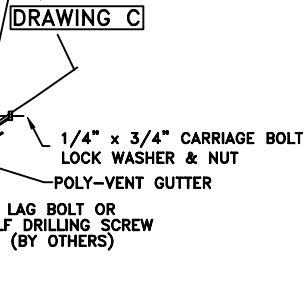
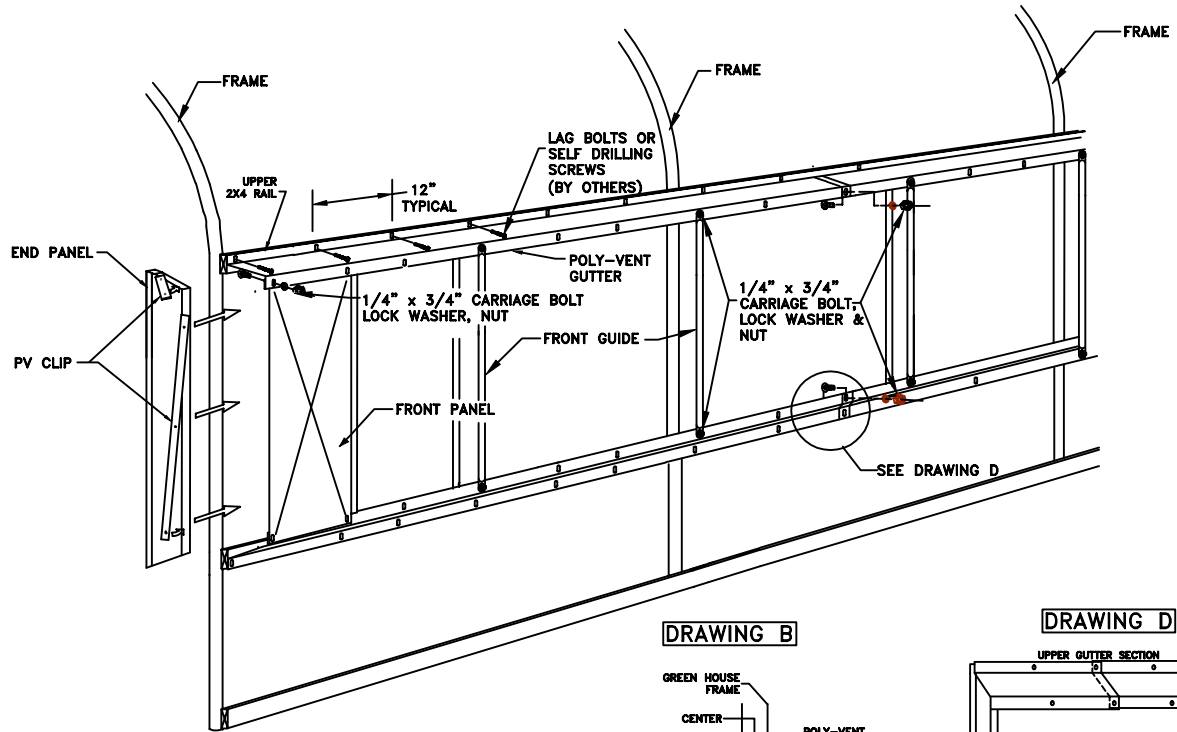
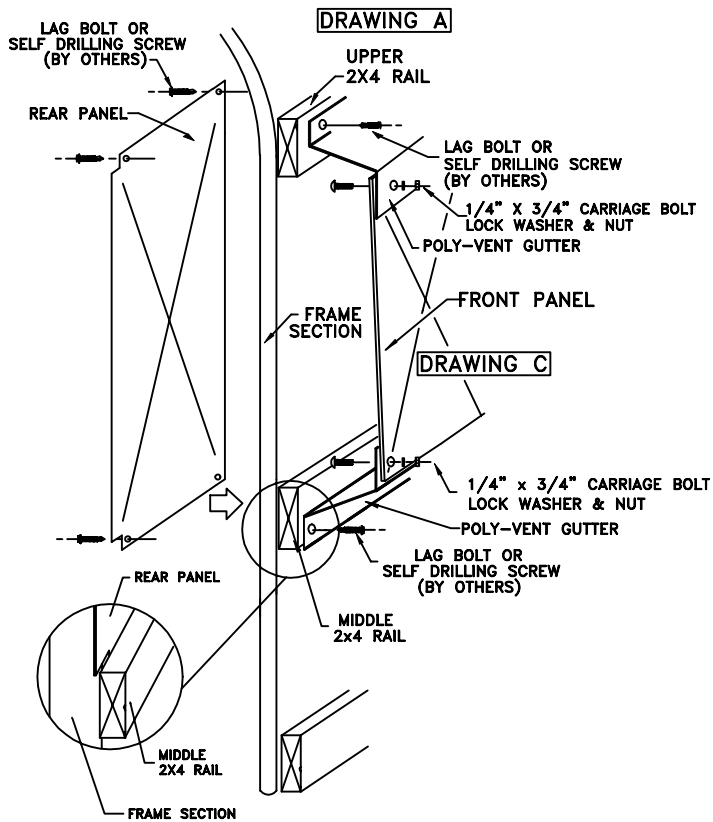
NOTE: "A" DIMENSION IS INSIDE TO INSIDE OF THE UPPER AND LOWER RAILS. THIS DIMENSION ASSUMES THAT 2x4'S ARE USED.



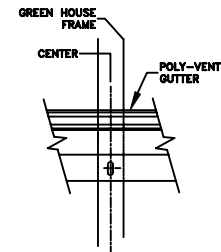
The vent rails on the structure are commonly treated 2x4 lumber. However, other applications can be used. In any case, it is necessary to install these rails to enable the Poly-Vent gutters to be hung in place. The rails should be mounted to the structure in an appropriate manner. Because a variety of rails might be used, there are no fastening devices supplied to fasten your Poly-Vent gutters to the rails. It is necessary for the installer to obtain lag screws, self drilling screws, or other appropriate fasteners for mounting the Poly-Vent gutters to the rails.

GUTTER & PANEL INSTALLATION

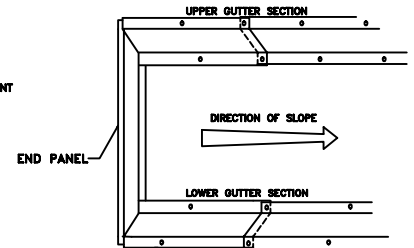
POLY-VENT



DRAWING B



DRAWING D



NOTE: SEE PAGE FOUR FOR GUIDE LOCATION.

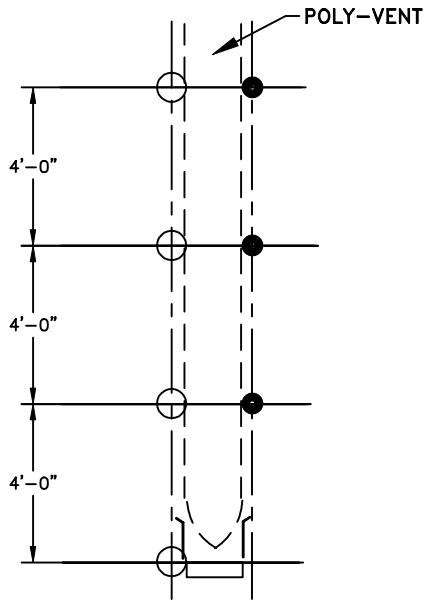
Begin your Poly-Vent installation by fastening the top Poly-Vent gutter to the upper 2x4 rail (See drawing A). **IMPORTANT** Be sure to position the Poly-Vent gutter so the pre-punched guide hole is located at the center of any frame (See drawing B). Drawing C shows the components to be installed on the middle 2x4 rail. Assemble remaining components as the drawing indicates. Prior to securing the lower Poly-Vent gutter, consider any skirting such as Polycarbonate sheeting that could be fastened with the same hardware.

WHEN OVERLAPPING GUTTER SECTIONS MAKE SURE THAT THE OVERLAP IS GOING IN THE DIRECTION OF THE SLOPE.

GUIDE INSTALLATION

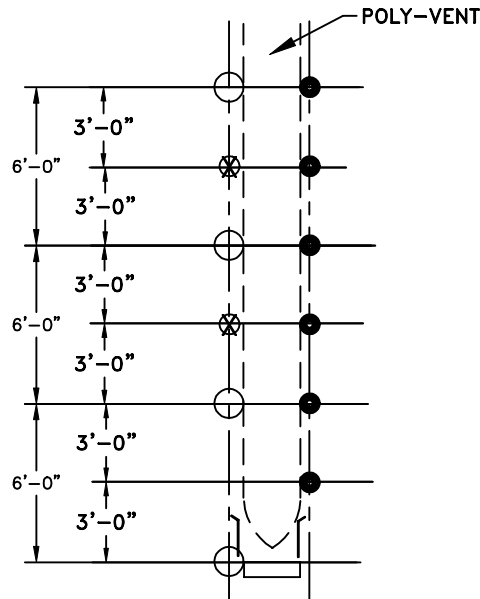
POLY-VENT

DIAGRAM 1



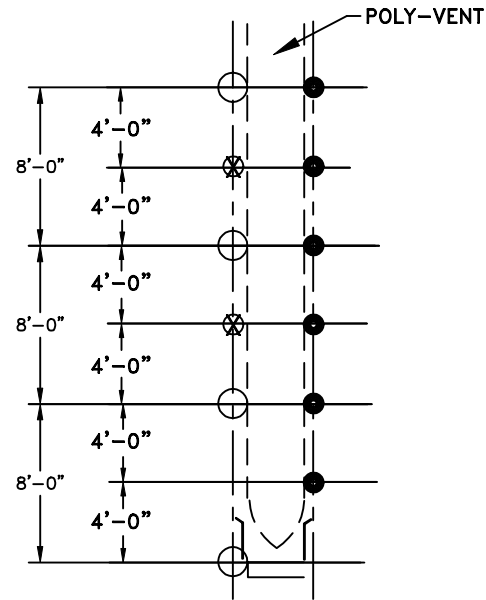
HOOP SPACING 4'-0"

Space front guides directly opposite hoops at 4'-0"



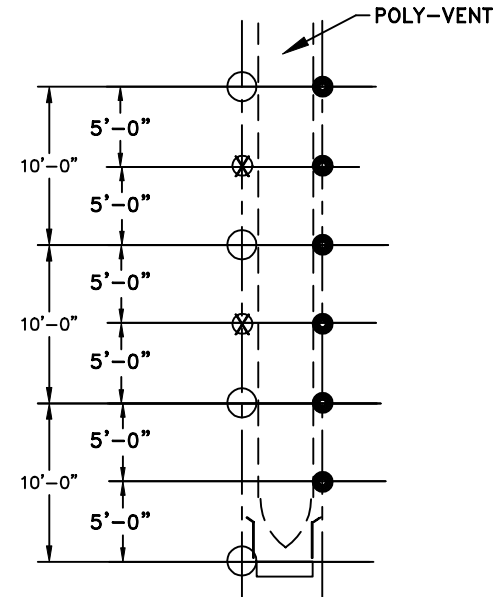
HOOP SPACING 6'-0"

Rear guides centered between hoops at 6'-0" increments.
Front guides directly opposite hoops and rear guides.



HOOP SPACING 8'-0"

Rear guides centered between hoops at 8'-0" increments.
Front guides directly opposite hoops and rear guides.



HOOP SPACING 10'-0"

Rear guides centered between hoops at 10'-0" increments.
Front guides directly opposite hoops and rear guides.

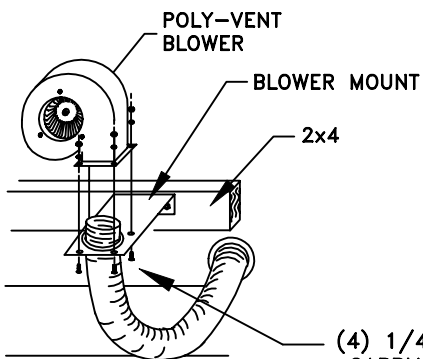
KEY:

- FRAME SECTION
- FRONT GUIDE
- ⊗ REAR GUIDE

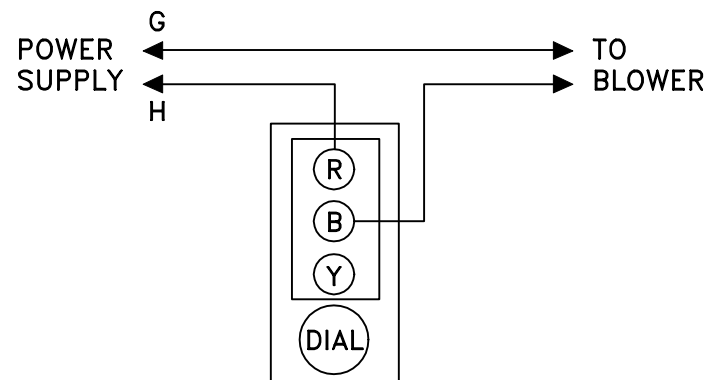
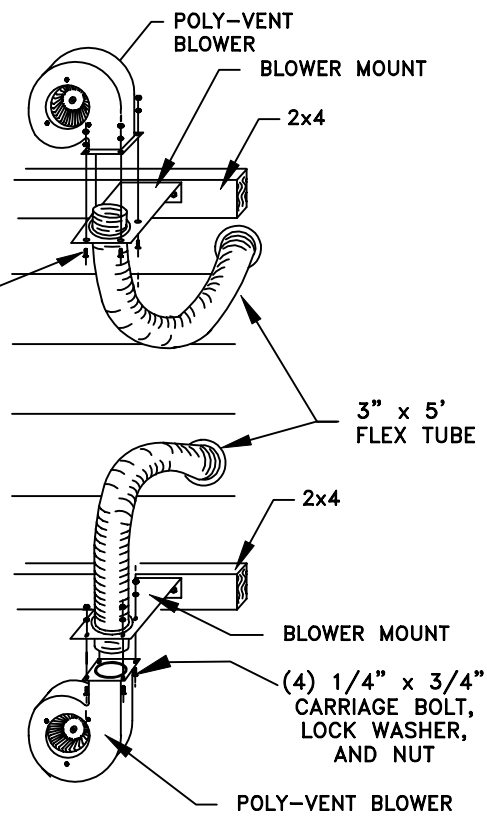
IMPORTANT: THE POLY-VENT BLOWER CAN BE INSTALLED NEAR THE ENDS AS WELL AS NEAR THE CENTER OF THE POLY-VENT.

Attach blower mount to side rail (fasteners by others). Next, install the Flex tubing to the Blower Mount as shown below. Now attach the Poly-Vent Blower to the Blower Mount using 1/4" X 3/4" carriage bolts, lock washers and nuts.

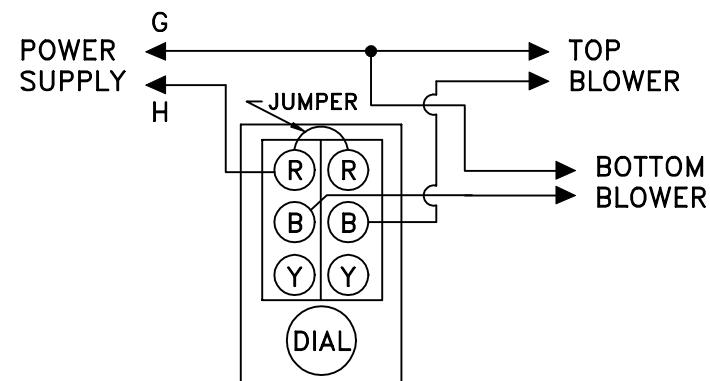
POLY-VENT II



POLY-VENT III



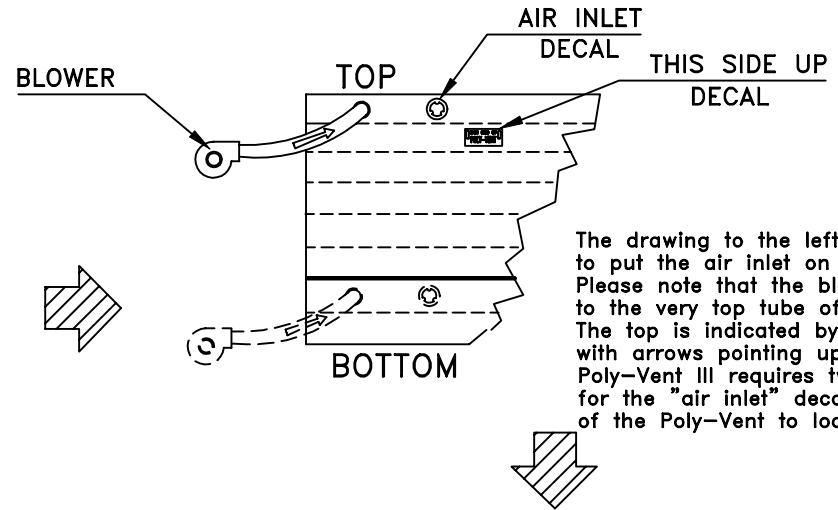
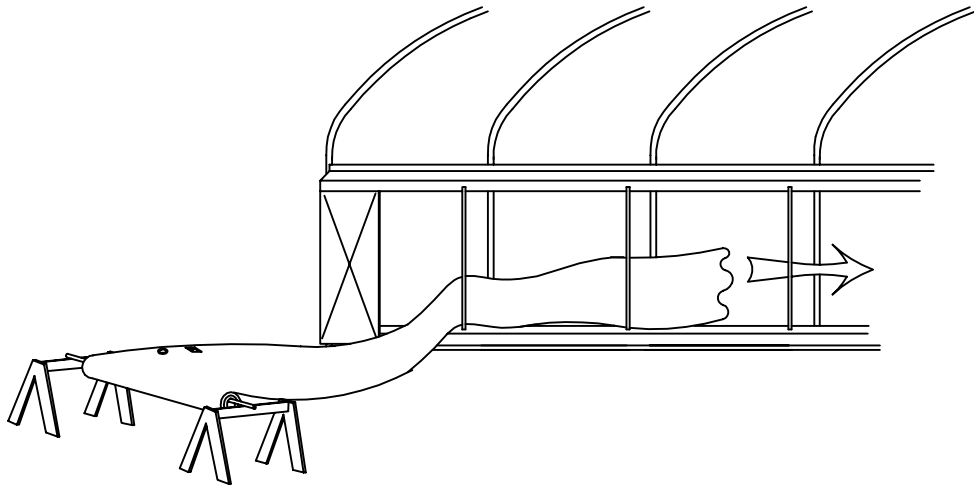
SINGLE STAGE THERMOSTAT (POLY-VENT II)



TWO STAGE THERMOSTAT (POLY-VENT III)

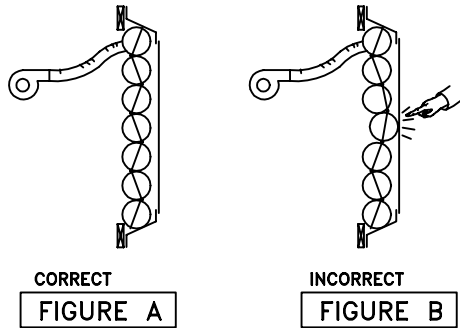
POLY-VENT INSTALLATION

POLY-VENT



The drawing to the left illustrates where to put the air inlet on your POLY-VENT. Please note that the blower is attached to the very top tube of the POLY-VENT. The top is indicated by a mylar decal with arrows pointing up. Poly-Vent III requires two blowers. Look for the "air inlet" decal near the bottom of the Poly-Vent to locate the flex tube.

Thread POLY-VENT through the vent frame work. Use caution in this procedure. Do not let POLY-VENT snag or catch any frame parts. Center the vent within the frame work. You can now install the flex tubing leading from the POLY-VENT blower.



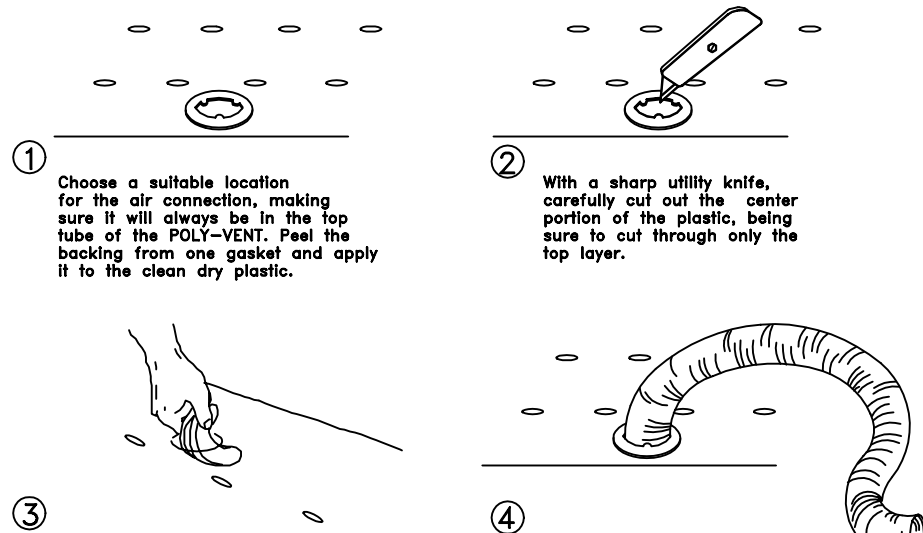
CORRECT
FIGURE A

INCORRECT
FIGURE B

IMPORTANT: Please note FIGURE A and FIGURE B.

These drawings illustrate end views of POLY-VENT. The POLY-VENT will want to take a zig-zag pattern. If you have one tube that is bulging, check your zig-zag pattern by inserting your hand in between the poly tubes. You will notice one row of seals are towards the inside, one row towards the outside, then inside, etc....

To fix the bulge, simply force the bulge inward with your hand the full length of the vent.



① Choose a suitable location for the air connection, making sure it will always be in the top tube of the POLY-VENT. Peel the backing from one gasket and apply it to the clean dry plastic.

② With a sharp utility knife, carefully cut out the center portion of the plastic, being sure to cut through only the top layer.

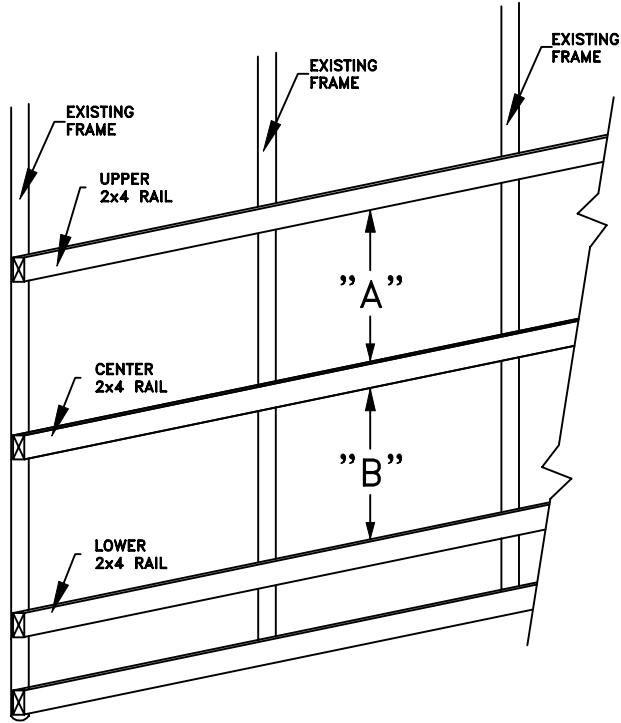
③ Remove the release paper from the second gasket, carefully fold, and slip through the hole just cut. Don't allow the adhesive part of the gasket to touch as you won't be able to unfold the gasket.

④ Next, press the flex tube into position. Make sure that sharp wire is not exposed to puncture the plastic.

Align the bottom gasket and press down. As a safety measure, it is a good idea to take an office stapler and staple the two gaskets together.

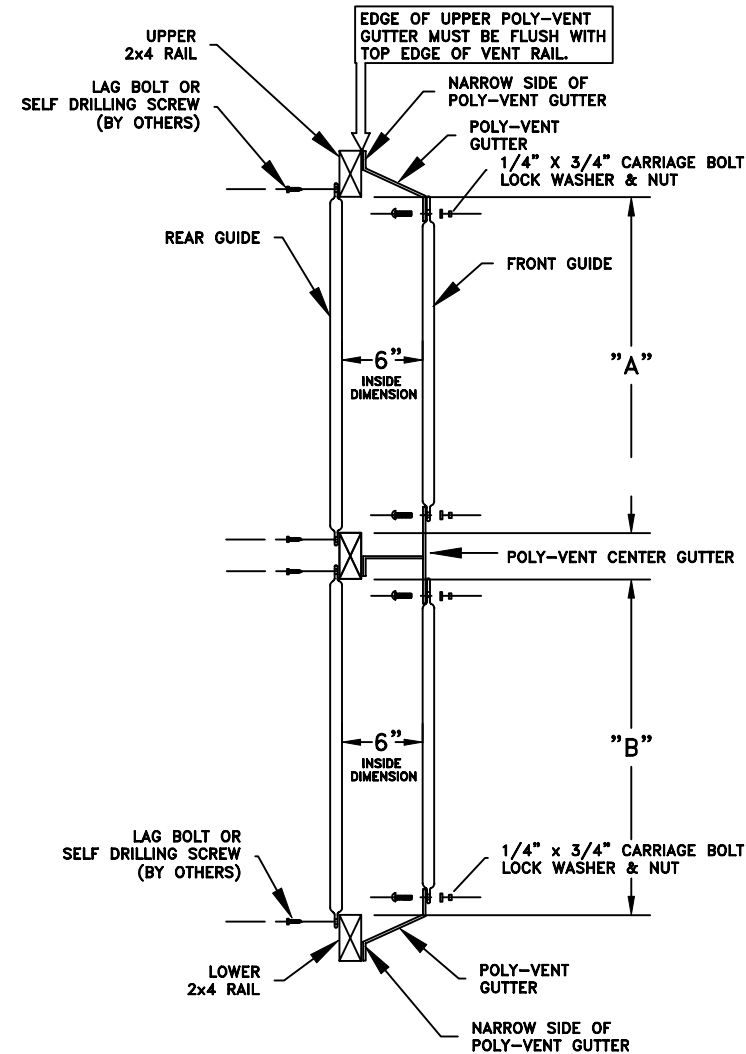
STACKED RAIL DIMENSIONS

POLY-VENT



POLY-VENT SIZE	"A" DIMENSION	"B" DIMENSION
2'-0"	1'-5 1/2"	1'-5 1/2"
3'-0"	2'-5 1/2"	2'-5 1/2"
4'-0"	3'-5 1/2"	3'-5 1/2"
5'-0"	4'-5 1/2"	4'-5 1/2"

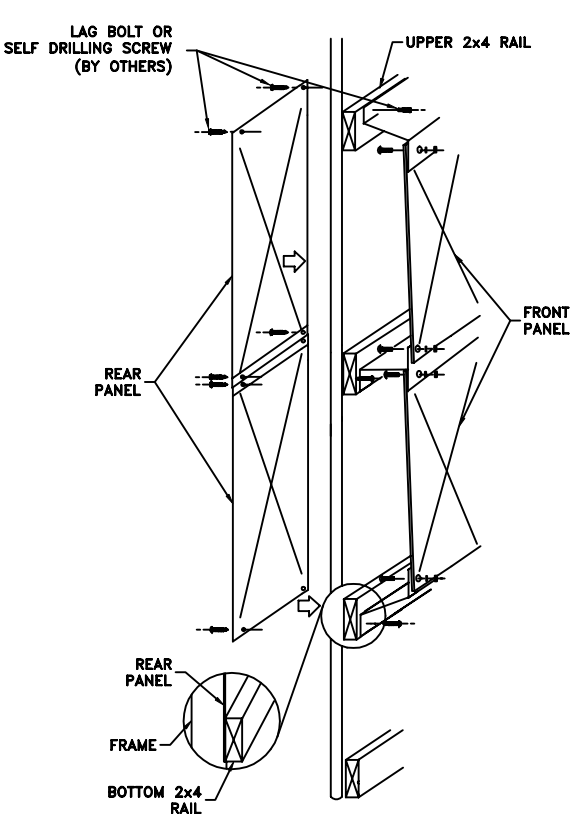
NOTE: "A" & "B" DIMENSION IS INSIDE TO INSIDE OF THE UPPER AND LOWER RAILS. THIS DIMENSION ASSUMES THAT 2x4'S ARE USED.



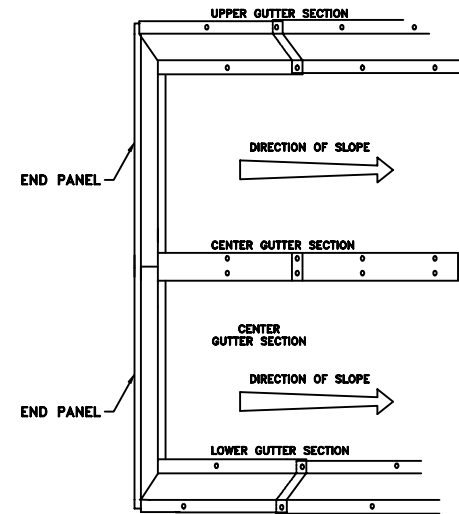
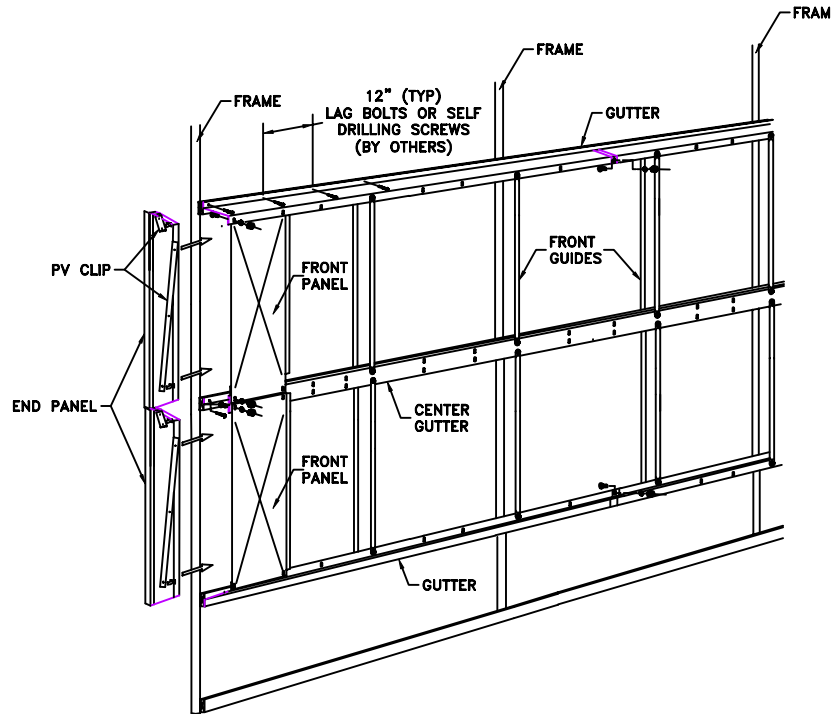
The vent rails on the structure are commonly treated 2x4 lumber. However, other applications can be used. In any case, it is necessary to install these rails to enable the Poly-Vent gutters to be hung in place. The rails should be mounted to the structure in an appropriate manner. Because a variety of rails might be used, there are no fastening devices supplied to fasten your Poly-Vent gutters to the rails. It is necessary for the installer to obtain lag screws, self drilling screws, or other appropriate fasteners for mounting the Poly-Vent gutters to the rails.

STACKED GUTTER & PANEL INSTALLATION

POLY-VENT



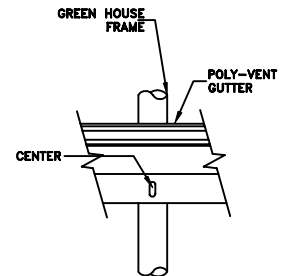
DRAWING A



WHEN OVERLAPPING GUTTER SECTIONS MAKE SURE THAT THE OVERLAP IS GOING IN THE DIRECTION OF THE SLOPE.

NOTE: 1/4" x 3/4" carriage bolts, lockwashers, and hex nuts are used to secure guides, front panels, and end panels.

NOTE: SEE PAGE FOUR FOR GUIDE LOCATION.



DRAWING B

Begin your poly-vent installation by fastening the top poly-vent gutter flush to the top of the upper 2x4 rail.(DRAWING A) **IMPORTANT** Be sure to position the poly vent gutter so the pre-punched guide hole is located at the center of any frame.(DRAWING B) Continue in same fashion with the center gutter then bottom gutter. Prior to securing the lower poly-vent gutter, consider any skirting such as polycarbonate sheeting that could be fastened with the same hardware.

LIMITED WARRANTY

For UV stabilized, 6 mil
polyethylene **POLY-VENT** film.

POLY-VENT is warranted for **up to three years** (from invoice date) against faulty workmanship and/or deterioration due to the action of ultraviolet (UV) light rays. Should **POLY-VENT** film fail due to workmanship and/or the action of UV on the material, it can be replaced according to the schedule:

Up to 12 months.....	100% of material
13 to 24 months.....	50%
25 to 36 months.....	20%

This warranty does not extend to mechanical damage, damage caused by unreasonable treatment or neglect, or damage due to unusual meteorological conditions.

This warranty is expressly in lieu of any other expressed or implied warranties, including any implied warranty of merchantability or fitness for any purpose intended.

Terms of limited warranty can change at any time.

POLY-VENT™

CARE INSTRUCTIONS

Below we list some hints on how to properly care for your new **POLY-VENT** installation.

1. Before installing **POLY-VENT** film, check for and remove any sharp edges in the working area (inside) of the **POLY-VENT** frame.
2. Inflate the **POLY-VENT** frequently, even during hot weather to keep it working properly. Make certain not to set things on the **POLY-VENT** when it is deflated.
3. Inflate your **POLY-VENT** after a rain to let any excess water drain off.
4. Check periodically for tears or punctures. If any holes are found, repair with polypatch tape.
5. Keep the gutters free of dirt and debris for a tight seal.
6. When **POLY-VENT** is not used for long periods, or is simply getting dirty, inflate the vent and rinse off the inside and outside with a hose.
7. If you are in a climate where you won't need your **POLY-VENT** for long periods of time, remove from the structure and store it in a safe place out of the sun. Another alternative is to cover your **POLY-VENT** with white poly and tape it down into the gutter so it stays clean and dry.

Please follow these care instructions and you and your plants will enjoy the use of your **POLY-VENT** for many seasons



P.O. Box 458 27725 Danville Avenue Castle Rock, Minnesota 55010

1-800-852-3443

1-651-463-7009